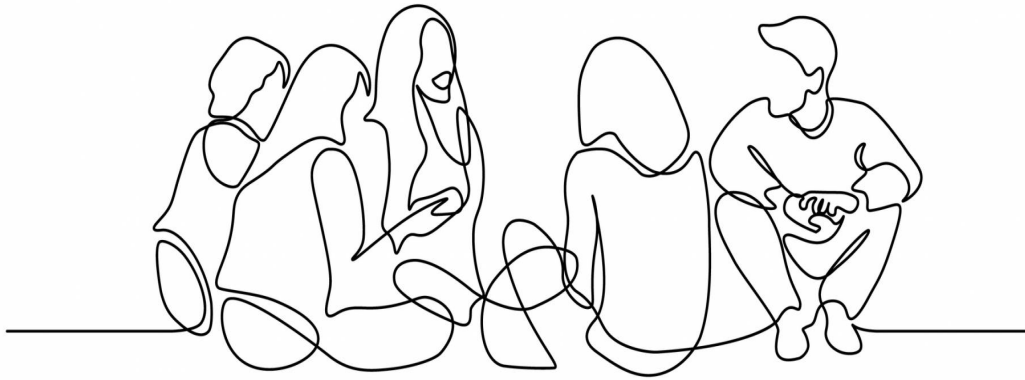


PREVENTION DURING ADOLESCENCE

WITH **DIANA HU**

FROM THE HAZELDEN BETTY FORD FOUNDATION



Parental involvement is a key component of effective substance misuse prevention. Children whose parents talk to them about alcohol and other drugs are less likely to use them. Parents have a unique and positive role during adolescence, while supporting the school's prevention efforts.

Join Diana Hu as she provides insight on how parents can help understand the essential role they play, how substance abuse affects a student evolving emotional, intellectual, and spiritual life, and the importance of modeling healthy, appropriate attitudes and behavior.



TUESDAY, OCTOBER 18

7:00 PM, UPPER SCHOOL ASSEMBLY



REGISTER HERE OR SCAN THE QR-CODE